

PAST LIFE WISDOM

Past Life Wisdom Part III

*"Our birth is
but a sleep
and a
forgetting;
the soul that
rises with us,
our life's star,
hath had
elsewhere its
setting, and
cometh from
afar."*

*~ William
Wordsworth*



Awaken the Wisdom of the Inner Life Bringing Life into Focus

There is an old saying that if we don't learn from history we are doomed to repeat it. That truth applies not just to nations, but also to our individual lives and growth. It is the main reason that past-life memory should be pursued. However, that pursuit can be more than mere curiosity or entertainment, but provide a deep reservoir

of information and experience to create your own spiritual basis to best serve your clients. This experience begins with a free exchange of ideas, pulling from deeper layers of consciousness to gain extraordinary insights. We will explore your inner wisdom for profound personal growth and evolution in others. However, this process is meant to be fun, a

spiritual adventure of profound insight, bliss and joy. Get the most out of your experience by staying firmly committed to the material designated for each week. There will be discussion, videos, practice sessions, exercises, reading assignments and a past life regression built into the process.

The Life of the Soul Before, During & After Life

Reincarnation literally means the return to the physical body. The belief is held that at death the soul exits one body and returns at some point to another physical form. Why believe in reincarnation? As humans we have many unanswered questions that are repeated over and over generation after generation. Who are we? Why are we here? Where do we come from? Where do we go from here? Why are we here at all? Why do we suffer from pain?

It is easy to go through life with the concept that we are born, we live and then we die and that's all there is to it. With this theory, we may see life as empty and meaningless. Look through the lens of a new vehicle, a gateway to our multidimensional universe. See how a new world view can revitalize your life, relationships and work, bringing you profound wisdom in all you do!

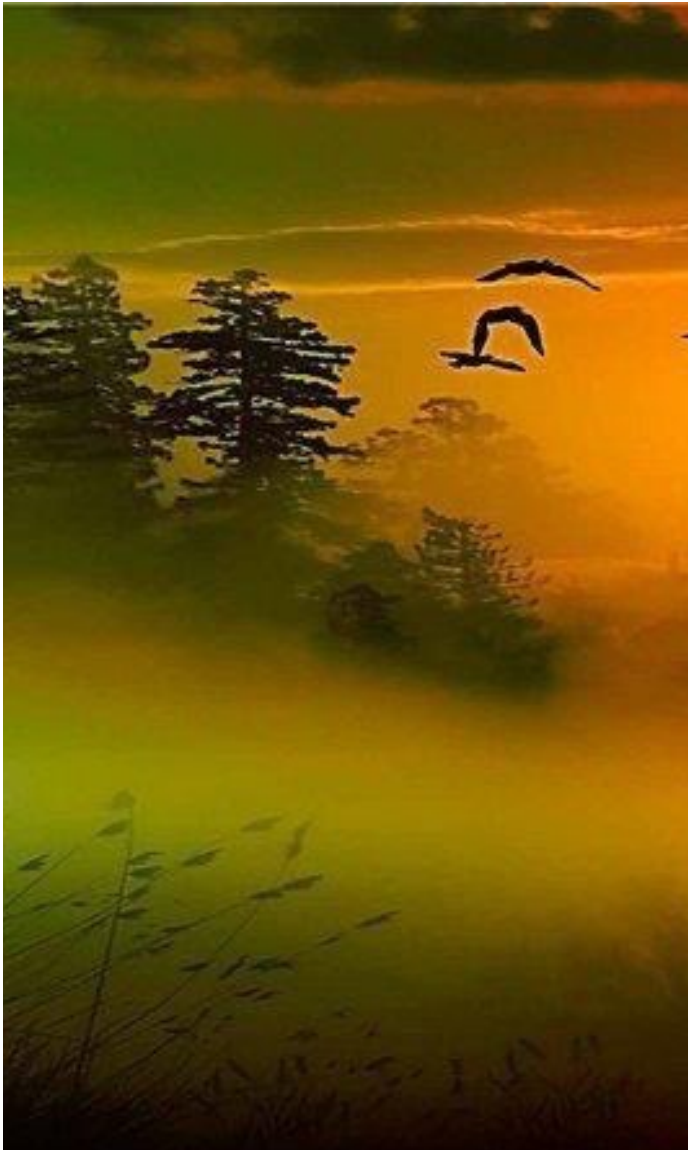
Each week's session involves reading, discussion, exercises, and more

Week Twenty-five	Spirit World: Intelligent & Source Driven
Week Twenty-Six	Bridges to the Universe
Week Twenty-Seven	Understanding Reincarnation
Week Twenty-Eight	Past Life Exploration: How Past Life Heals
Week Twenty-Nine	Overview & Case Studies of Near Death Experience
Week Thirty	Our Multidimensional Universe...Holographic Universe
Week Thirty-One	Working Consciously ~ Thought Responsive Universe
Week Thirty-Two	The Art & Practice Of OBE: Traveling Our Planet & Galaxy
Week Thirty-Three	A Presence of Another Kind: Orbs & Crop Circles
Week Thirty-Four	Extraterrestrials & UFO's
Week Thirty-Five	Traveling the Matrix of Our Multidimensional World
Week Thirty-Six	Unity Consciousness ~ Healing the Grid

"I adopted the theory of reincarnation when I was twenty-six. Work is futile if we cannot utilize the experience we collect in one life in the next."

~ Henry Ford





"They will come back and come back again, as long as the red Earth rolls.

He never wasted a leaf or a tree.

Do you think He would squander souls?"

~ Rudyard Kipling



Coursework Objectives for Part III

Past Life Wisdom

Learning Objectives

- Watch a dozens of selected videos to grasp the understanding of PLR, NDE and OBE
- Read case studies across topics to see the deeper implications of each area of study
- We will use inner travel to see a past life, remote view, move out of body, and explore the Spirit World through guided, hypnotic visualization
- Finally we will find the value of each of these areas and formulate your understanding of why you are here, your

purpose on this planet and the wisdom that is personal to you

Tools will be used to explore, practice with find a personal path to mastery to

- Explore the far reaches of your inner life through hypnotic, guided visualization
- Deepening processes further still to come to your own personal wisdom